

LANTERN MAKING DESIGNS

LANTERN DESIGN 1

Tools:

- Scissors or snips
- Glue
- Stapler

Materials:

- Containers
- Coloured A3 paper for design 2
- Coloured paper for decorations
- Cellophane (optional)
- Wire for handle
- Paints



Note:

- Gather a collection of containers - flower holders, plastic bottles, chocolate boxes etc that can be turned into very simple lanterns.
- Your designs need to be strong enough to carry a candle.
- Use traditional ideas you have talked about for your decorations.

Handy hint: try painting containers one colour first, like lucky Chinese red, then use black or gold for traditional designs.

LANTERN MAKING DESIGNS

at .asianz.org.nz



LANTERN DESIGN 2

Paper lanterns

1. Decorate your A3 paper using bright colours or traditional Chinese design ideas and colours. Another option would be to relate the artwork to the Lantern Festival story. Make your designs exciting and fun!
2. Fold decorated paper in half the long way.
3. Cut slits up from fold every 6cm, stopping 6cm from the open end.
4. Open the folded paper, bend and round out along the short edge into a circle shape. Staple the two open ends together at the top, middle and bottom.
5. Cut out paper strips and staple to the top of the lantern for the handle.



LANTERN MAKING DESIGNS

at asianz.org.nz



LANTERN DESIGN 3

Tools and Materials:

Tools:

- Scissors or snips
- Pointy nose pliers
- Pencil
- Ruler
- Wire cutters

Inner framework:

- Wire or bamboo – recommend 1.6mm
- Florist's tape – expensive option
- Masking tape

External framework:

- Tissue paper
- Cellophane
- Rice wrapping paper
- Dark coloured paper for cut out designs
- Candles – tea candles are a good idea
- Small light kits (talk to your science department about this option)
- Batteries (to go with light kit)

Let's make the lanterns...



First come the frames. Simple or complex there is just one rule. Make them strong!

1. Decide on a shape. Squares, oblongs and triangles are easy.



Tear shapes and globes are trickier.

These frames give you lanterns like these.



2. Measure, bend, cut and tightly tape to make up your lantern frames.



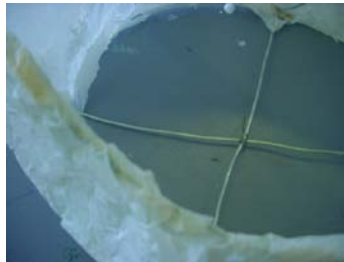
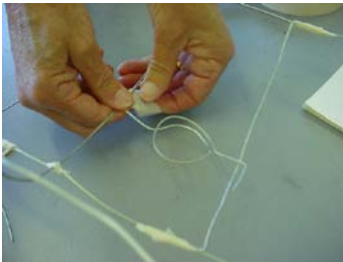
3. Reinforce with inner supports.



4. Build frames for things like necks, beaks or even wings.



5. With your frame build a place to sit your light source. That is, a holder or pin to fix your candle to.



6. Draw around a frame panel leaving about 5cm on each side.



7. Cover your wire with glue.



8. Cut slits in the paper ready to fold it over the sticky section of the frame.



9. Fold and glue each panel in turn.



10. The very last edge is glued to the outside of the joining panel.



11. Add your decorations. Discuss traditional Chinese decorations, symbols, characters, stories and colours, and incorporate these in your design.



12. Wipe cellophane with a damp cloth to remove "wrinkles" or cover tissue paper with light paste and then dry to stiffen tissue paper.



13. And your lantern is finished.



For more information go to Asia:NZ's website

www.asianz.org.nz